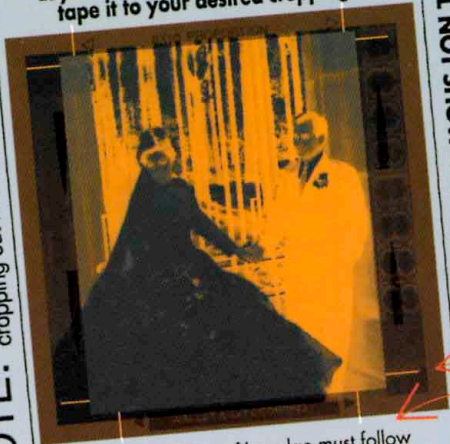


# The Easy-Crop Mask

## IMPORTANT INSTRUCTIONS

Lay down negative on opening and tape it to your desired cropping

**NOTE:** Keep neg. area to be printed within cropping cut marks. See size proportions



**ARROWS** on film edge must follow direction of arrows printed around opening. Negative area will view as in your prints

MAKE SURE THAT TAPE WILL NOT SHOW ON OPENING

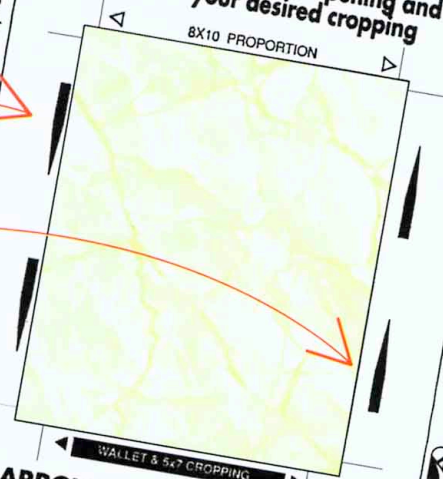


Position your negative mask opening on the light table. The light will shine through the cropping cuts on the mask making positioning of the negative much easier.

## IMPORTANT INSTRUCTIONS

Lay down negative on opening and tape it to your desired cropping

**NOTE:** Keep neg. area to be printed within cropping cut marks. See size proportions



**ARROWS** on film edge must follow direction of arrows printed around opening. Negative area will view as in your prints

MAKE SURE THAT TAPE WILL NOT SHOW ON OPENING



Match the direction of the arrows on the negative (counter clockwise) with the arrows on the mask. The image should view as you expect it to print.

